

**MUTA Antibody**  
**Rabbit mAb**  
**Catalog # AP92759****Specification**

---

**MUTA Antibody - Product Information**

|  |                        |
|--|------------------------|
| Application                            | WB, IHC, ICC           |
| Primary Accession                      | <a href="#">P22033</a> |
| Reactivity                             | Rat                    |
| Clonality                              | Monoclonal             |
| <b>Other Names</b>                     |                        |
| MCM; Methylmalonyl CoA isomerase; Mut; |                        |

|               |            |
|---------------|------------|
| Isotype       | Rabbit IgG |
| Host          | Rabbit     |
| Calculated MW | 83134 Da   |

**MUTA Antibody - Additional Information**

|                              |  |
|------------------------------|--|
| Dilution                     | WB~~1:1000<br>IHC~~1:100~500<br>ICC~~N/A   |
| Purification                 | Affinity-chromatography  |
| Immunogen                    | A synthesized peptide derived from human MUTA  |
| Description                  | Involved in the degradation of several amino acids, odd-chain fatty acids and cholesterol via propionyl-CoA to the tricarboxylic acid cycle. MCM has different functions in other species. |
| Storage Condition and Buffer | Rabbit IgG in phosphate buffered saline , pH 7.4, 150mM NaCl, 0.02% sodium azide and 50% glycerol. Store at +4°C short term. Store at -20°C long term. Avoid freeze / thaw cycle.          |

**MUTA Antibody - Protein Information****Name** MMUT ([HGNC:7526](#))**Function**

Catalyzes the reversible isomerization of methylmalonyl-CoA (MMCoA) (generated from branched-chain amino acid metabolism and degradation of dietary odd chain fatty acids and cholesterol) to succinyl-CoA (3-carboxypropionyl-CoA), a key intermediate of the tricarboxylic acid cycle.

**Cellular Location**

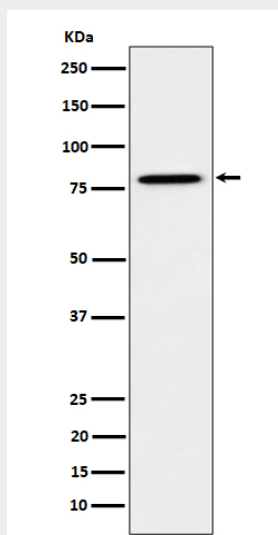
Mitochondrion matrix. Mitochondrion. Cytoplasm

## MUTA Antibody - Protocols

Provided below are standard protocols that you may find useful for product applications.

- [Western Blot](#)
- [Blocking Peptides](#)
- [Dot Blot](#)
- [Immunohistochemistry](#)
- [Immunofluorescence](#)
- [Immunoprecipitation](#)
- [Flow Cytometry](#)
- [Cell Culture](#)

## MUTA Antibody - Images



Western blot analysis of MUTA expression in HeLa cell lysate.